

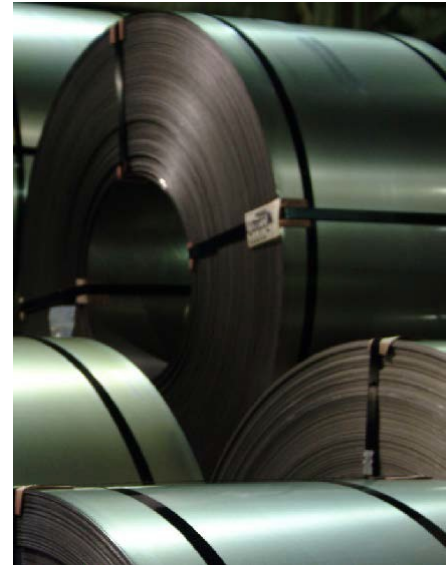
Cold Rolled

SAE 1006/1008 Commercial Steel

Grades: ASTM A1008 CS Type A, B, C SAE J403 1006, 1008		
Standard Widths	Nominal Gauge	
in (mm)	min in (mm)	max in (mm)
30 (762)	0.020 (0.51)	0.133 (3.37)
36 (915)	0.020 (0.51)	0.133 (3.37)
42 (1067)	0.020 (0.51)	0.133 (3.37)
48 (1219)	0.020 (0.51)	0.133 (3.37)
54 (1372)	0.020 (0.51)	0.133 (3.37)
60 (1524)	0.020 (0.51)	0.133 (3.37)
66 (1676)	0.029 (0.73)	0.133 (3.37)
72 (1828)	0.031 (0.78)	0.133 (3.37)

SAE 1006/1008 Drawing Steel & Severe Forming Application

Grades: ASTM A1008 DS Type A, B SAE J403 1006, 1008		
Standard Widths	Nominal Gauge	
in (mm)	min in (mm)	max in (mm)
30 (762)	0.020 (0.51)	0.115 (2.91)
36 (915)	0.020 (0.51)	0.115 (2.91)
42 (1067)	0.020 (0.51)	0.115 (2.91)
48 (1219)	0.020 (0.51)	0.115 (2.91)
54 (1372)	0.020 (0.51)	0.115 (2.91)
60 (1524)	0.020 (0.51)	0.115 (2.91)
66 (1676)	0.033 (0.83)	0.115 (2.91)
72 (1828)	0.036 (0.91)	0.115 (2.91)



SAE 1010/1017 Commercial Steel

Grades: SAE J403 1010, 1012, 1015, 1016, 1017		
Standard Widths	Nominal Gauge	
in (mm)	min in (mm)	max in (mm)
30 (762)	0.020 (0.51)	0.121 (3.06)
36 (915)	0.020 (0.51)	0.121 (3.06)
42 (1067)	0.020 (0.51)	0.121 (3.06)
48 (1219)	0.020 (0.51)	0.121 (3.06)
54 (1372)	0.020 (0.51)	0.121 (3.06)
60 (1524)	0.022 (0.56)	0.121 (3.06)
66 (1676)	0.037 (0.94)	0.121 (3.06)
72 (1828)	0.040 (1.01)	0.121 (3.06)

SAE 1018/1022 Commercial Steel

Grades: SAE J403 1018, 1020, 1022		
Standard Widths	Nominal Gauge	
in (mm)	min in (mm)	max in (mm)
30 (762)	0.025 (0.64)	0.064 (1.62)
36 (915)	0.025 (0.64)	0.064 (1.62)
42 (1067)	0.025 (0.64)	0.064 (1.62)
48 (1219)	0.025 (0.64)	0.064 (1.62)
51 (1295)	0.026 (0.66)	0.064 (1.62)

40 Ksi (280 MPa) HSLA Formable Steel

Grades: SAE J1392 040XLK		
Standard Widths	Nominal Gauge	
in (mm)	min in (mm)	max in (mm)
30 (762)	0.030 (0.76)	0.074 (1.88)
36 (915)	0.030 (0.76)	0.074 (1.88)
42 (1067)	0.030 (0.76)	0.074 (1.88)
48 (1219)	0.030 (0.76)	0.074 (1.88)
54 (1372)	0.032 (0.81)	0.074 (1.88)
62 (1575)	0.036 (0.91)	0.074 (1.88)

50 Ksi (350 MPa) HSLA Formable Steel

Grades: ASTM A1008 HSLAS-F 50 SAE J1392 050XLK, 050XLF		
Standard Widths	Nominal Gauge	
in (mm)	min in (mm)	max in (mm)
30 (762)	0.030 (0.76)	0.074 (1.88)
36 (915)	0.030 (0.76)	0.074 (1.88)
42 (1067)	0.030 (0.76)	0.074 (1.88)
48 (1219)	0.030 (0.76)	0.074 (1.88)
54 (1372)	0.032 (0.81)	0.074 (1.88)
62 (1575)	0.036 (0.91)	0.074 (1.88)

60 Ksi (420 MPa) HSLA Formable Steel

Grades: ASTM A1008 HSLAS-F 60 SAE J2340 420XF		
Standard Widths	Nominal Gauge	
in (mm)	min in (mm)	max in (mm)
30 (762)	0.045 (1.14)	0.060 (1.52)
36 (915)	0.045 (1.14)	0.060 (1.52)
42 (1067)	0.045 (1.14)	0.060 (1.52)
48 (1219)	0.045 (1.14)	0.060 (1.52)
54 (1372)	0.045 (1.14)	0.060 (1.52)
62 (1575)	0.045 (1.14)	0.057 (1.45)

HSLA Weathering Steel

Grades: ASTM A606 Type 4		
Standard Widths	Nominal Gauge	
in (mm)	min in (mm)	max in (mm)
30 (762)	0.026 (0.66)	0.092 (2.33)
36 (915)	0.026 (0.66)	0.092 (2.33)
42 (1067)	0.026 (0.66)	0.092 (2.33)
48 (1219)	0.030 (0.76)	0.092 (2.33)
54 (1372)	0.034 (0.86)	0.092 (2.33)
64 (1626)	0.040 (1.01)	0.092 (2.33)

Cold Finished Steel

*DSPC 700T: Meets ASTM A 1011 UHSS Grade 100 Type 1 Gauge		
Standard Widths	Nominal Gauge	
in (mm)	min in (mm)	max in (mm)
32 (800)	0.064 (1.63)	0.082 (2.08)
36 (915)	0.064 (1.63)	0.082 (2.08)
42 (1067)	0.069 (1.75)	0.082 (2.08)
48 (1219)	0.079 (2.00)	0.082 (2.08)

*Specification available by inquiry only

Manufacturing Tolerances

Full ASTM Tolerances (A568) are available on all products.
Improved Standard Tolerances are available by inquiry on all products produced from DSPC Hot Band.

Surface Finishes Available

Surface Finish	Ra Value (in) Typical	Peak Count (min)
Light Matte	25-35	75
Matte	30-60	100

Contact Us

Head Office & Steelworks

105 West Street
Sault Ste. Marie, ON
P6A 7B4
T: 705.945.2351
F: 705.945.2203

Corporate Sales Office

Suite 301
5515 North Service Road
Burlington, ON
L7L 6G4
CAN: 800.387.7850
US: 800.387.9495
F: 905.331.3408

Regional Sales

Calgary 403.620.2843
Montreal 514.694.9558
Vancouver 778.887.1560
Chicago 219.229.8322
Minneapolis 612.206.0595
Pittsburgh 724.941.8059